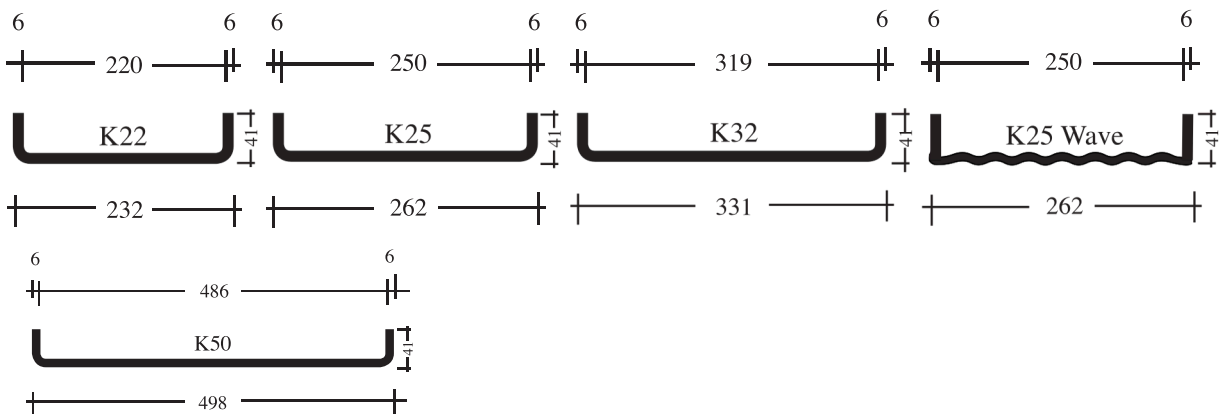


## STANDARD



### Technical information on Pilkington Profilit

Glass thickness 6 mm, flange height 41 mm



Glass thickness 7 mm, flange height 60 mm



Cutting tolerances of + 3.0 mm are allowed. Tolerances according to EN 572-7. Dimensions are nominal.

Tolerances:  $b \pm 2.0$  mm  
 $d \pm 0.2$  mm  
 $h \pm 1.0$  mm

## Pilkington Profilit™ - Product characteristics

| Dimensions | Pilkington Profilit™ types   | K22  | K25  | K32  | K50  | K25 Wave | K22/60/7 | K25/60/7 | K32/60/7 | K25/60/7 Wave |
|------------|--|------|------|------|------|----------|----------|----------|----------|---------------|
|            | Width b (mm)   | 232  | 262  | 331  | 498  | 262      | 232      | 262      | 331      | 262           |
|            | Flange height h (mm)   | 41   | 41   | 41   | 41   | 41       | 60       | 60       | 60       | 60            |
|            | Glass thickness d (mm)   | 6    | 6    | 6    | 6    | 6        | 7        | 7        | 7        | 7             |
|            | Weight (single glazing) kg/m <sup>2</sup>                                  | 19,5 | 19   | 18,2 | 17   | 19       | 25,5     | 24,5     | 22,5     | 24,5          |
|            | Weight (double glazing) kg/m <sup>2</sup>                                  | 39   | 38   | 36,4 | 34   | 38       | 51       | 49       | 45       | 49            |
|            | Max. supply length L <sub>max</sub> (mm)<br>(not max. installation length) | 6000 | 6000 | 6000 | 5000 | 6000     | 7000     | 7000     | 7000     | 7000          |

## Heat insulation, Solar control and Light Transmission:

| Product combination  | UG value (W/m <sup>2</sup> K) | g value (-) | Light transmission (%) |
|--|-------------------------------|-------------|------------------------|
| Pilkington Profilit™ single glazed   | 5,7                           | 0,70        | 60                     |
| Pilkington Profilit™ double glazed without coating   | 2,8                           | 0,68        | 75                     |
| Pilkington Profilit™ double glazed<br>Outer shell Pilkington Profilit™ uncoated<br>Inner shell Pilkington Profilit™ Plus 1,7   | 1,8                           | 0,63        | 70                     |
| Pilkington Profilit™ double glazed<br>Outer shell Pilkington Profilit™ Antisol<br>Inner shell Pilkington Profilit™ uncoated  | 2,8                           | 0,49        | 43                     |
| Pilkington Profilit™ double glazed<br>Outer shell Pilkington Profilit™ Antisol<br>Inner shell Pilkington Profilit™ Plus 1,7  | 1,8                           | 0,45        | 41                     |
| Pilkington Profilit™ double glazed<br>Outer shell Pilkington Profilit™ Amethyst<br>Inner shell Pilkington Profilit™ Amethyst   | 2,8                           | 0,46        | 40                     |
| Pilkington Profilit™ double glazed<br>Outer shell Pilkington Profilit™ Amethyst<br>Inner shell Pilkington Profilit™ Plus 1,7   | 1,8                           | 0,49        | 51                     |
| Pilkington Profilit™ double glazed<br>Outer shell Pilkington Profilit™ uncoated<br>Inner shell Pilkington Profilit™ low-e plus<br>Inner shell Pilkington Profilit™ lw-e plus | 0,92                          | 0,51        | 52                     |

Heat insulation and solar control characteristics can be further improved by using e.g. triple glazed options or with translucent insulation materials. UG value according to EN 673, g value and light transmission according to EN 410.

| Production combination   | R <sub>w</sub> - value (dB) |
|--|-----------------------------|
| Pilkington Profilit™ double glazed without gaskets                     | up to 41 dB                 |
| Pilkington Profilit™ double glazed without gaskets no. 165 and no. 166 | up to 43 dB                 |
| Pilkington Profilit™ triple glazed                                     | up to 57 dB                 |

Noise control values tested in Pilkington Profilit™ system according to EN ISO 140-3.