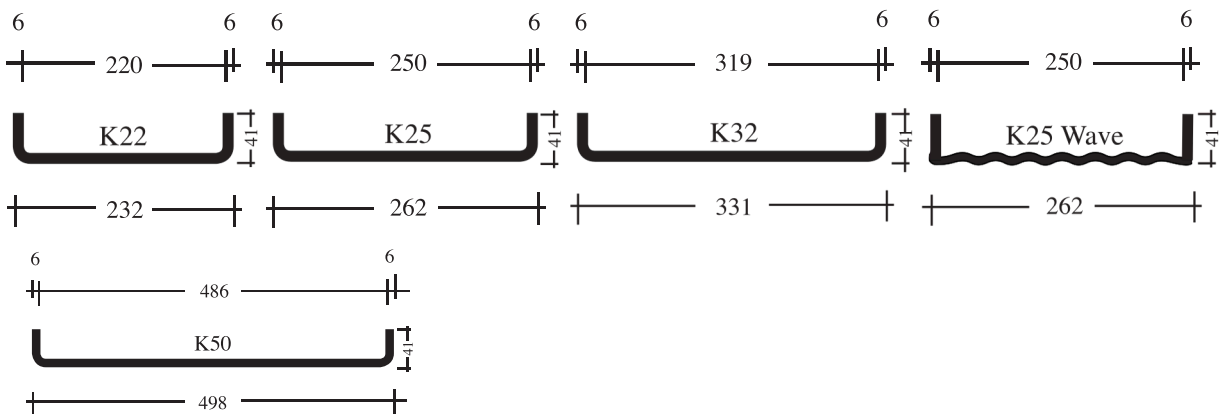


K50/41/6 STANDARD OPAL



Technical information on Pilkington Profilit

Glass thickness 6 mm, flange height 41 mm



Glass thickness 7 mm, flange height 60 mm



Cutting tolerances of + 3.0 mm are allowed. Tolerances according to EN 572-7. Dimensions are nominal.

Tolerances: $b \pm 2.0$ mm
 $d \pm 0.2$ mm
 $h \pm 1.0$ mm

Pilkington Profilit™ - Product characteristics

Dimensions	Pilkington Profilit™ types	K22	K25	K32	K50	K25 Wave	K22/60/7	K25/60/7	K32/60/7	K25/60/7 Wave
	Width b (mm)	232	262	331	498	262	232	262	331	262
	Flange height h (mm)	41	41	41	41	41	60	60	60	60
	Glass thickness d (mm)	6	6	6	6	6	7	7	7	7
	Weight (single glazing) kg/m ²	19,5	19	18,2	17	19	25,5	24,5	22,5	24,5
	Weight (double glazing) kg/m ²	39	38	36,4	34	38	51	49	45	49
	Max. supply length L _{max} (mm) (not max. installation length)	6000	6000	6000	5000	6000	7000	7000	7000	7000

Heat insulation, Solar control and Light Transmission:

Product combination	UG value (W/m ² K)	g value (-)	Light transmission (%)
Pilkington Profilit™ single glazed	5,7	0,70	60
Pilkington Profilit™ double glazed without coating	2,8	0,68	75
Pilkington Profilit™ double glazed Outer shell Pilkington Profilit™ uncoated Inner shell Pilkington Profilit™ Plus 1,7	1,8	0,63	70
Pilkington Profilit™ double glazed Outer shell Pilkington Profilit™ Antisol Inner shell Pilkington Profilit™ uncoated	2,8	0,49	43
Pilkington Profilit™ double glazed Outer shell Pilkington Profilit™ Antisol Inner shell Pilkington Profilit™ Plus 1,7	1,8	0,45	41
Pilkington Profilit™ double glazed Outer shell Pilkington Profilit™ Amethyst Inner shell Pilkington Profilit™ Amethyst	2,8	0,46	40
Pilkington Profilit™ double glazed Outer shell Pilkington Profilit™ Amethyst Inner shell Pilkington Profilit™ Plus 1,7	1,8	0,49	51
Pilkington Profilit™ double glazed Outer shell Pilkington Profilit™ uncoated Inner shell Pilkington Profilit™ low-e plus Inner shell Pilkington Profilit™ lw-e plus	0,92	0,51	52

Heat insulation and solar control characteristics can be further improved by using e.g. triple glazed options or with translucent insulation materials. UG value according to EN 673, g value and light transmission according to EN 410.

Production combination	R _w - value (dB)
Pilkington Profilit™ double glazed without gaskets	up to 41 dB
Pilkington Profilit™ double glazed without gaskets no. 165 and no. 166	up to 43 dB
Pilkington Profilit™ triple glazed	up to 57 dB

Noise control values tested in Pilkington Profilit™ system according to EN ISO 140-3.