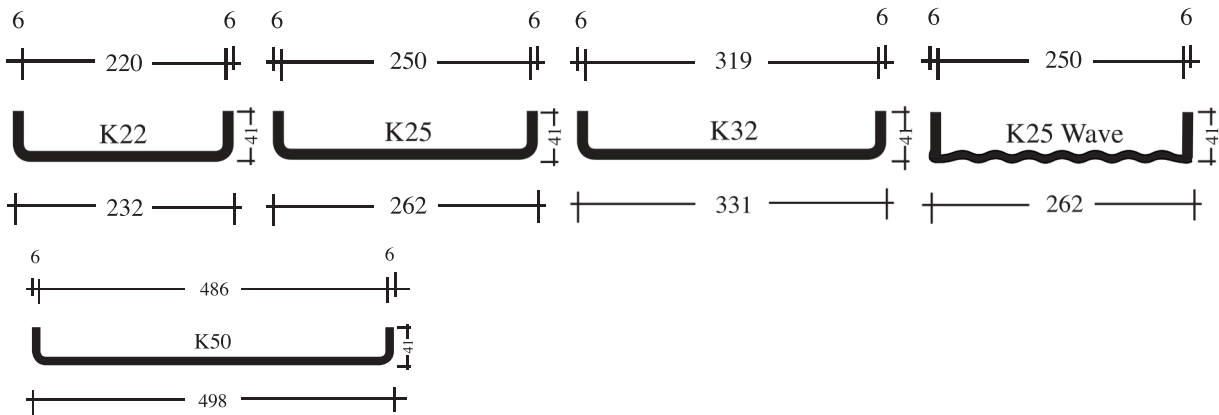


K25/60/7 STANDARD PLUS 1,7



Technical information on Pilkington Profilit

Glass thickness 6 mm, flange height 41 mm



Glass thickness 7 mm, flange height 60 mm



Cutting tolerances of + 3.0 mm are allowed. Tolerances according to EN 572-7. Dimensions are nominal.

Tolerances: $b \pm 2.0$ mm
 $d \pm 0.2$ mm
 $h \pm 1.0$ mm

Pilkington Profilit™ - Product characteristics

| Dimensions | Pilkington Profilit™ types | K22 | K25 | K32 | K50 | K25 Wave | K22/60/7 | K25/60/7 | K32/60/7 | K25/60/7 Wave |
|------------|--|------|------|------|------|----------|----------|----------|----------|---------------|
| | Width b (mm) | 232 | 262 | 331 | 498 | 262 | 232 | 262 | 331 | 262 |
| | Flange height h (mm) | 41 | 41 | 41 | 41 | 41 | 60 | 60 | 60 | 60 |
| | Glass thickness d (mm) | 6 | 6 | 6 | 6 | 6 | 7 | 7 | 7 | 7 |
| | Weight (single glazing) kg/m ² | 19,5 | 19 | 18,2 | 17 | 19 | 25,5 | 24,5 | 22,5 | 24,5 |
| | Weight (double glazing) kg/m ² | 39 | 38 | 36,4 | 34 | 38 | 51 | 49 | 45 | 49 |
| | Max. supply length L _{max} (mm) (not max. installation length) | 6000 | 6000 | 6000 | 5000 | 6000 | 7000 | 7000 | 7000 | 7000 |

Heat insulation, Solar control and Light Transmission:

| Product combination | UG value (W/m ² K) | g value (-) | Light transmission (%) |
|--|-------------------------------|-------------|------------------------|
| Pilkington Profilit™ single glazed | 5,7 | 0,70 | 60 |
| Pilkington Profilit™ double glazed without coating | 2,8 | 0,68 | 75 |
| Pilkington Profilit™ double glazed Outer shell Pilkington Profilit™ uncoated Inner shell Pilkington Profilit™ Plus 1,7 | 1,8 | 0,63 | 70 |
| Pilkington Profilit™ double glazed Outer shell Pilkington Profilit™ Antisol Inner shell Pilkington Profilit™ uncoated | 2,8 | 0,49 | 43 |
| Pilkington Profilit™ double glazed Outer shell Pilkington Profilit™ Antisol Inner shell Pilkington Profilit™ Plus 1,7 | 1,8 | 0,45 | 41 |
| Pilkington Profilit™ double glazed Outer shell Pilkington Profilit™ Amethyst Inner shell Pilkington Profilit™ Amethyst | 2,8 | 0,46 | 40 |
| Pilkington Profilit™ double glazed Outer shell Pilkington Profilit™ Amethyst Inner shell Pilkington Profilit™ Plus 1,7 | 1,8 | 0,49 | 51 |
| Pilkington Profilit™ double glazed Outer shell Pilkington Profilit™ uncoated Inner shell Pilkington Profilit™ low-e plus Inner shell Pilkington Profilit™ lw-e plus | 0,92 | 0,51 | 52 |

Heat insulation and solar control characteristics can be further improved by using e.g. triple glazed options or with translucent insulation materials. UG value according to EN 673, g value and light transmission according to EN 410.

| Production combination | R _w - value (dB) |
|--|-----------------------------|
| Pilkington Profilit™ double glazed without gaskets | up to 41 dB |
| Pilkington Profilit™ double glazed without gaskets no. 165 and no. 166 | up to 43 dB |
| Pilkington Profilit™ triple glazed | up to 57 dB |

Noise control values tested in Pilkington Profilit™ system according to EN ISO 140-3.